

1. Conwy Estuary
2. Conwy Bay
3. TraethLafan
4. Menai Strait
5. Penmon
6. Red Wharf Bay to Moelfre
7. Dulas Bay
8. Amlwch and Cemaes
9. Cemlyn Bay
10. Carmel Head to Penrhyn
11. Holyhead
12. Inland Sea
13. Holyhead Mountain
14. Rhoscolyn
15. Rhosneigr
16. Malltraeth
17. Caernarfon
18. Abermenai
19. Criccieth to Mochras
20. Porthmadog and Glaslyn Estuary
21. Dwyryd Estuary and MorfaHarlech
22. Mochrasto Fairbourne and SarnBadrig
23. Mawddach Estuary
24. Fairbourne to Tonfanau
25. Tywyn and Sarn-y-bwch
26. Borth
27. Dyfi Estuary
28. North-east of Anglesey
29. North of Anglesey
30. North-west of Anglesey
31. West of Anglesey
32. Caernafon Bay
33. Tremadog Bay
34. Barmouth Bay
35. Aberdyfi Bay
36. Cardigan Bay

- 1: Teifi Estuary
- 2: Cardigan Island and Cemmaes Head
- 3: Pen y Afr to Pen y Bal
- 4: Newport Bay
- 5: Dinas Island
- 6: Fishguard Bay east
- 7: Fishguard and Goodwick Harbours
- 8: North open sea
- 9: Newport and Fishguard outer sand bar
- 10: Crincoed Point and Strumble Head
- 11: Strumble Head to Penbwchdy
- 12: Strumble Head deep water
- 13: Penbwchdy to Penllechen
- 14: Western sand and gravel bars
- 15: St Davids Head
- 16: Whitesands Bay
- 17: Ramsey Sound
- 18: Ramsey Island coastal waters
- 19: Bishops and Clerks
- 20: St Brides Bay coastal waters north
- 21: St Brides Bay coastal waters east
- 22: St Brides Bay coastal waters south - Borough Head
- 23: St Brides Bay south coastal waters - The Nab Head
- 24: St Brides Bay
- 25: Skomer Island and Marloes Peninsula
- 26: Skokholm and Gateholm coastal waters
- 27: Grassholm and the Smalls
- 28: West open sea
- 29: Southern inshore waters
- 30: Southern offshore waters
- 31: Outer Milford Haven
- 32: Inner Milford Haven
- 33: Dagleddau
- 34: Freshwater West
- 35: Castlemartin coastal waters
- 36: Stackpole coastal waters
- 37: Freshwater East and Manorbier
- 38: Lydstep Haven coastal waters
- 39: Tenby and Caldey Island
- 40: Carmarthen Bay west
- 41: Carmarthen Bay north - Pendine Sands
- 42: Carmarthen Bay
- 43: Bristol Channel offshore
- 44: Western offshore - very deep water

Wales National Seascapes Character Assessment

Figure 2: Draft Marine Character Areas showing Local SCAs

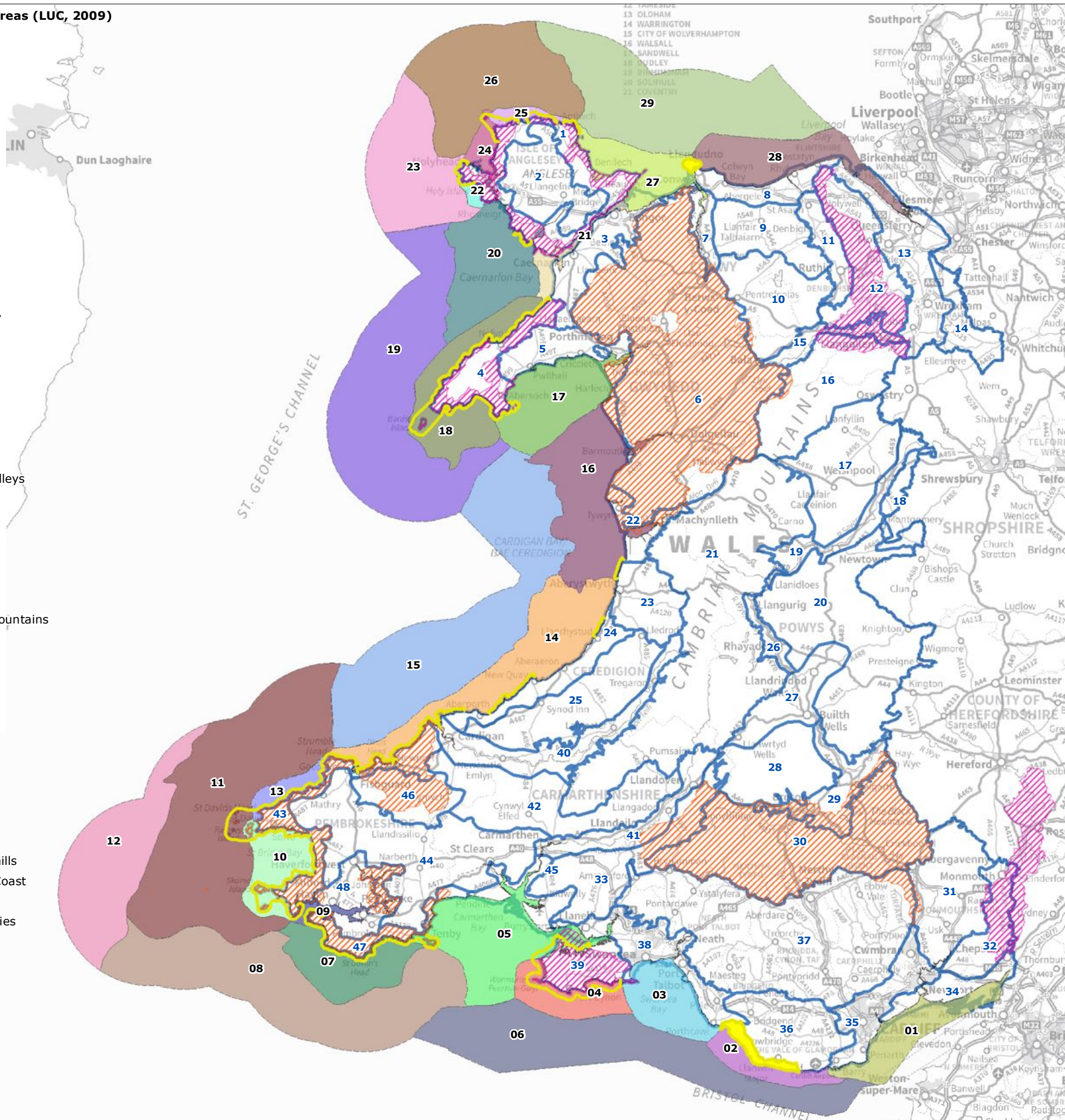
- 01: Severn Estuary and Cardiff Bay
- 02: Nash Sands and Glamorgan Coastal Waters
- 03: Swansea Bay and Porthcawl
- 04: Helwick Channel and The Gower
- 05: Carmarthen Bay and Estuaries
- 06: Bristol Channel
- 07: South Pembrokeshire Coastal and Inshore Waters
- 08: South Pembrokeshire Open Waters
- 09: Milford Haven
- 10: Western Bays and Coastal Islands
- 11: West Pembrokeshire Islands, Bars and Inshore Waters
- 12: Irish Sea Offshore
- 13: St David's to Strumble Head Coastal Waters
- 14: Cardigan Bay (south)
- 15: Outer Cardigan Bay
- 16: Cardigan Bay (north) and Estuaries
- 17: Tremadog Bay and Dwyryd Estuary
- 18: Llŷn and Bardsey Island
- 19: Llŷn and South West Anglesey Offshore Waters
- 20: Caernarfon Bay
- 21: Menai Strait
- 22: Holy Island West and Penrhos Bay
- 23: West Anglesey Open Waters
- 24: Holyhead Bay and The Skerries
- 25: North Anglesey Coastal Waters
- 26: North-West Anglesey Open Waters
- 27: Conwy and Red Wharf Bays
- 28: Rhyl Flats and Dee Estuary
- 29: Outer Liverpool and Conwy Bays

Map Scale @ A3: 1:1,000,000



Wales Regional Landscape Character Areas (LUC, 2009)

- 1: Anglesey Coast
- 2: Central Anglesey
- 3: Arfon
- 4: Llŷn
- 5: Tremadoc Bay
- 6: Snowdonia
- 7: Conwy Valley
- 8: North Wales Coast
- 9: Rhos
- 10: Denbigh Moors
- 11: Vale of Clwyd
- 12: Clwydian Range
- 13: Deeside and Wrexham
- 14: Maelor
- 15: Vale of Llangollen and Dee Valley
- 16: Berwyn
- 17: Montgomeryshire Hills and Vales
- 18: Shropshire Hills (Outliers)
- 19: Severn Valley
- 20: Radnorshire Hills
- 21: Cambrian Mountains
- 22: Aberdyfi Coast
- 23: Rheidol and Ystwyth Hills and Valleys
- 24: Ceredigion Coast
- 25: Bro Ceredigion
- 26: Upper Wye Valley
- 27: The Vales of Irton and Ithon
- 28: Epynt Plateau and Valleys
- 29: Wye and Usk Vales
- 30: Brecon Beacons and the Black Mountains
- 31: Central Monmouthshire
- 32: Wye Valley and Wentwood
- 33: Gwendraeth Vales
- 34: Gwent Levels
- 35: Cardiff, Barry and Newport
- 36: Vale of Glamorgan
- 37: South Wales Valleys
- 38: Swansea Bay
- 39: Gower
- 40: Teifi Valley
- 41: Tywi Valley
- 42: Pembroke and Carmarthen Foothills
- 43: West and North Pembrokeshire Coast
- 44: Taf and Cleddau Vales
- 45: Taf, Tywi and Gwendraeth Estuaries
- 46: Preseli Hills
- 47: South Pembrokeshire Coast
- 48: Milford Haven



Wales National Seascape Character Assessment

Figure 3: Draft Marine Character Areas with Regional LCA and Protected Landscapes

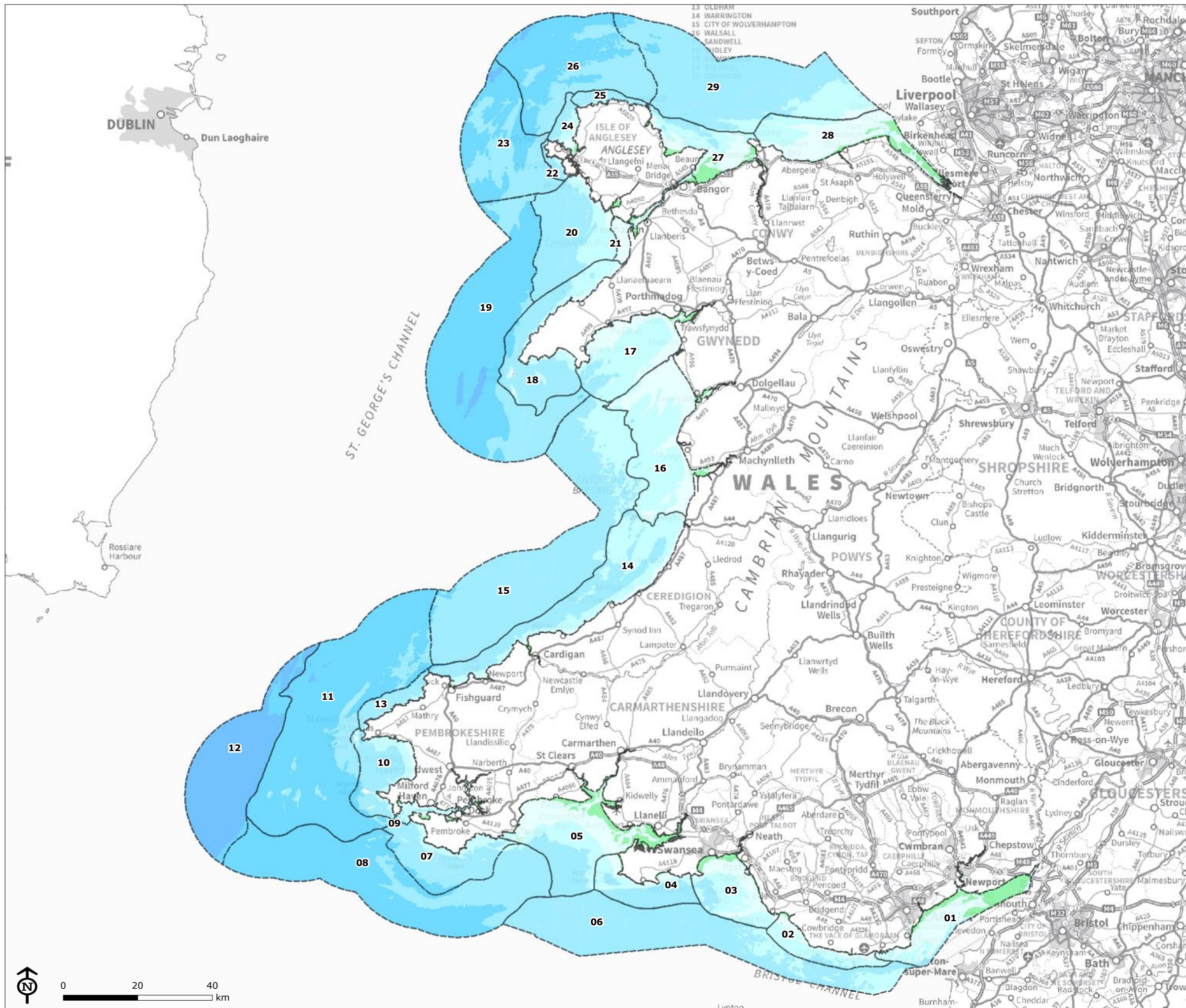
- 01: Severn Estuary and Cardiff Bay
 - 02: Nash Sands and Glamorgan Coastal Waters
 - 03: Swansea Bay and Porthcawl
 - 04: Helwick Channel and The Gower
 - 05: Carmarthen Bay and Estuaries
 - 06: Bristol Channel
 - 07: South Pembrokeshire Coastal and Inshore Waters
 - 08: South Pembrokeshire Open Waters
 - 09: Milford Haven
 - 10: Western Bays and Coastal Islands
 - 11: West Pembrokeshire Islands, Bars and Inshore Waters
 - 12: Irish Sea Offshore
 - 13: St David's to Strumble Head Coastal Waters
 - 14: Cardigan Bay (south)
 - 15: Outer Cardigan Bay
 - 16: Cardigan Bay (north) and Estuaries
 - 17: Tremadog Bay and Dwyryd Estuary
 - 18: Llŷn and Bardsey Island
 - 19: Llŷn and South West Anglesey Offshore Waters
 - 20: Caernarfon Bay
 - 21: Menai Strait
 - 22: Holy Island West and Penrhos Bay
 - 23: West Anglesey Open Waters
 - 24: Holyhead Bay and The Skerries
 - 25: North Anglesey Coastal Waters
 - 26: North-West Anglesey Open Waters
 - 27: Conwy and Red Wharf Bays
 - 28: Rhyl Flats and Dee Estuary
 - 29: Outer Liverpool and Conwy Bays
- Protected Landscapes**
- Area of Outstanding Natural Beauty
 - National Park
 - Heritage Coast

Map Scale @ A3: 1:1,000,000



Wales National Seascape Character Assessment

Figure 4: Draft Marine Character Areas with Bathymetry



- 01: Severn Estuary and Cardiff Bay
- 02: Nash Sands and Glamorgan Coastal Waters
- 03: Swansea Bay and Porthcawl
- 04: Helwick Channel and The Gower
- 05: Carmarthen Bay and Estuaries
- 06: Bristol Channel
- 07: South Pembrokeshire Coastal and Inshore Waters
- 08: South Pembrokeshire Open Waters
- 09: Milford Haven
- 10: Western Bays and Coastal Islands
- 11: West Pembrokeshire Islands, Bars and Inshore Waters
- 12: Irish Sea Offshore
- 13: St David's to Strumble Head Coastal Waters
- 14: Cardigan Bay (south)
- 15: Outer Cardigan Bay
- 16: Cardigan Bay (north) and Estuaries
- 17: Tremadog Bay and Dwyryd Estuary
- 18: Llŷn and Bardsey Island
- 19: Llŷn and South West Anglesey Offshore Waters
- 20: Caernarfon Bay
- 21: Menai Strait
- 22: Holy Island West and Penrhos Bay
- 23: West Anglesey Open Waters
- 24: Holyhead Bay and The Skerries
- 25: North Anglesey Coastal Waters
- 26: North-West Anglesey Open Waters
- 27: Conwy and Red Wharf Bays
- 28: Rhyl Flats and Dee Estuary
- 29: Outer Liverpool and Conwy Bays

Bathymetry Depth Areas

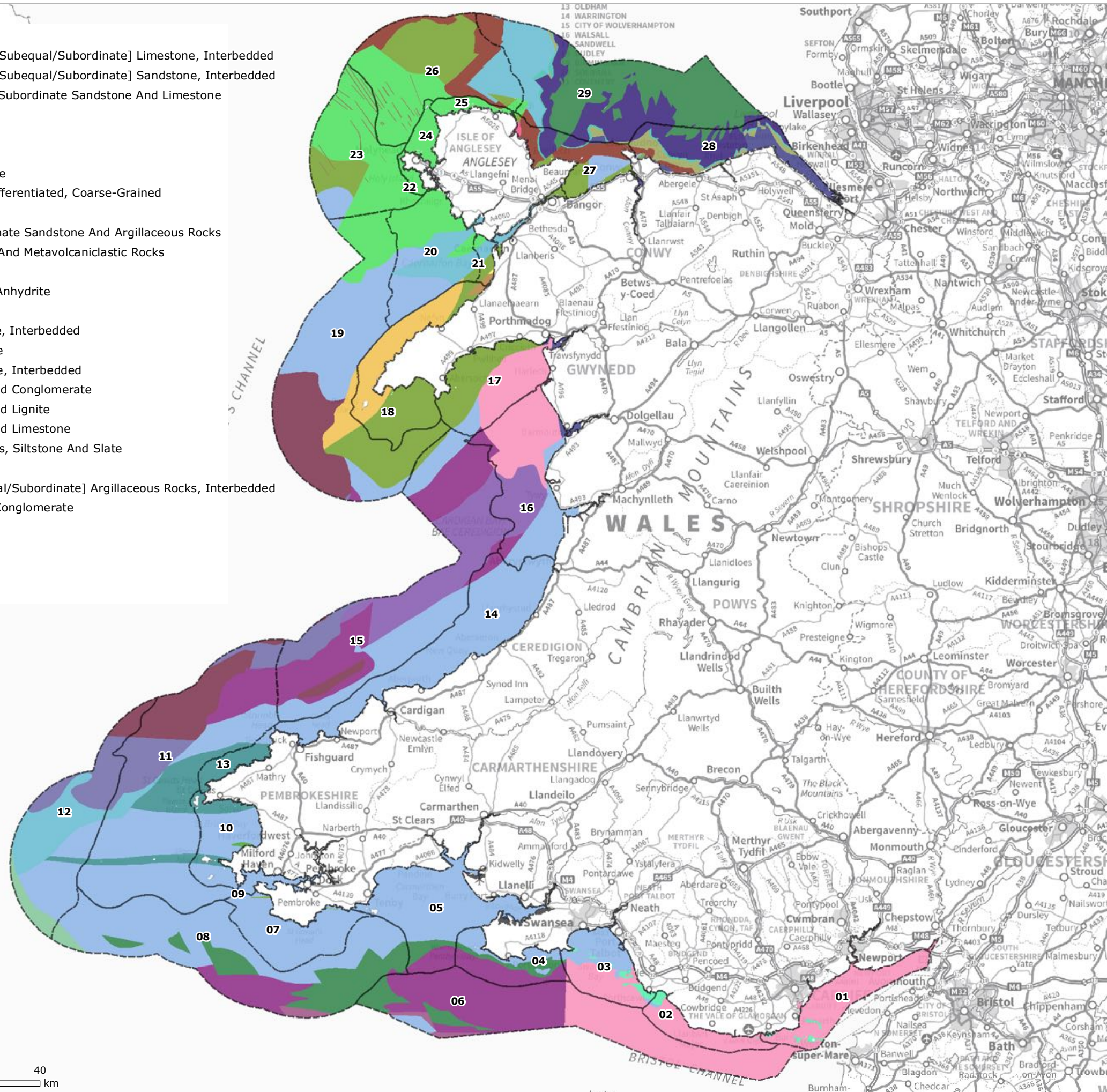
- Drying
- <=10m
- <=20m
- <=50m
- <=100m
- <=500m

Map Scale @ A3: 1:1,000,000



Offshore Bedrock Geology

- Argillaceous Rocks And [Subequal/Subordinate] Limestone, Interbedded
- Argillaceous Rocks And [Subequal/Subordinate] Sandstone, Interbedded
- Argillaceous Rocks With Subordinate Sandstone And Limestone
- Chalk
- Dolerite
- Gneiss
- Greywacke And Mudstone
- Intermediate Rock, Undifferentiated, Coarse-Grained
- Limestone
- Limestone With Subordinate Sandstone And Argillaceous Rocks
- Metasedimentary Rocks And Metavolcaniclastic Rocks
- Mudstone
- Mudstone And Gypsum/Anhydrite
- Mudstone And Halite
- Mudstone And Limestone, Interbedded
- Mudstone And Sandstone
- Mudstone And Sandstone, Interbedded
- Mudstone, Sandstone And Conglomerate
- Mudstone, Sandstone And Lignite
- Mudstone, Sandstone And Limestone
- Mudstone, Volcanic Rocks, Siltstone And Slate
- Sandstone
- Sandstone And [Subequal/Subordinate] Argillaceous Rocks, Interbedded
- Sandstone Breccia And Conglomerate
- Schist
- Slate
- Slate And Siltstone
- Tuff



Wales National Seascape Character Assessment

Figure 5: Draft Marine Character Areas with Bedrock Geology

- 01: Severn Estuary and Cardiff Bay
- 02: Nash Sands and Glamorgan Coastal Waters
- 03: Swansea Bay and Porthcawl
- 04: Helwick Channel and The Gower
- 05: Carmarthen Bay and Estuaries
- 06: Bristol Channel
- 07: South Pembrokeshire Coastal and Inshore Waters
- 08: South Pembrokeshire Open Waters
- 09: Milford Haven
- 10: Western Bays and Coastal Islands
- 11: West Pembrokeshire Islands, Bars and Inshore Waters
- 12: Irish Sea Offshore
- 13: St David's to Strumble Head Coastal Waters
- 14: Cardigan Bay (south)
- 15: Outer Cardigan Bay
- 16: Cardigan Bay (north) and Estuaries
- 17: Tremadog Bay and Dwyryd Estuary
- 18: Llŷn and Bardsey Island
- 19: Llŷn and South West Anglesey Offshore Waters
- 20: Caernarfon Bay
- 21: Menai Strait
- 22: Holy Island West and Penrhos Bay
- 23: West Anglesey Open Waters
- 24: Holyhead Bay and The Skerries
- 25: North Anglesey Coastal Waters
- 26: North-West Anglesey Open Waters
- 27: Conwy and Red Wharf Bays
- 28: Rhyl Flats and Dee Estuary
- 29: Outer Liverpool and Conwy Bays

Map Scale @ A3: 1:1,000,000

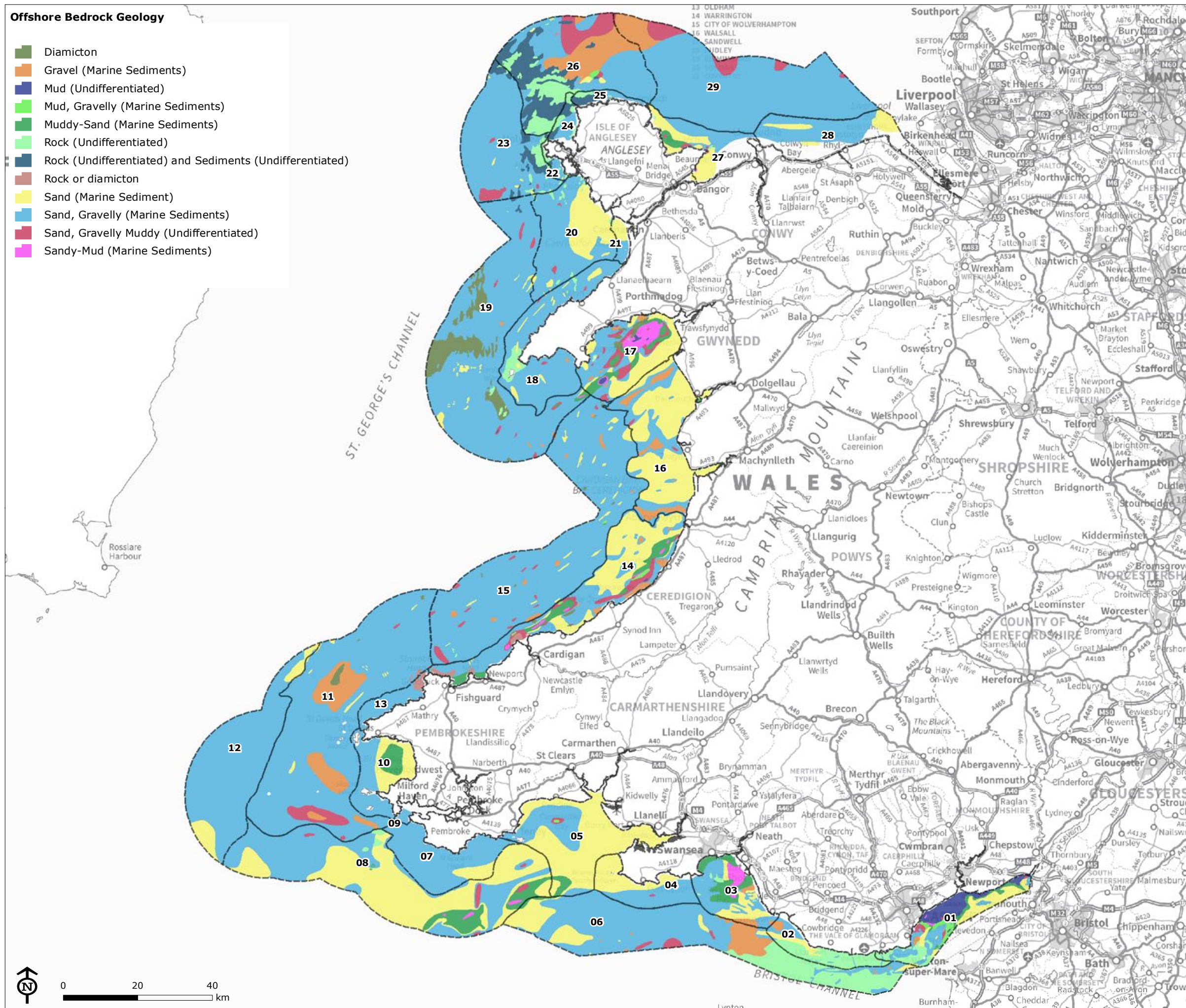


Contains Ordnance Survey Data. Ordnance Survey Licence number 100019741. Crown Copyright and Database Right (2015).
 © Countryside Council for Wales. All rights reserved.
 Contains Natural Resources Wales information © Natural Resources Wales and database right.
 Contains derived Ordnance Survey Data. Ordnance Survey licence number 100019741. Crown Copyright and Database right 2015.
 Reproduced with the permission of the British Geological Survey ©NERC. All rights Reserve

Source: LUC, British Geological Survey, Ordnance Survey

Offshore Bedrock Geology

- Diamicton
- Gravel (Marine Sediments)
- Mud (Undifferentiated)
- Mud, Gravelly (Marine Sediments)
- Muddy-Sand (Marine Sediments)
- Rock (Undifferentiated)
- Rock (Undifferentiated) and Sediments (Undifferentiated)
- Rock or diamicton
- Sand (Marine Sediment)
- Sand, Gravelly (Marine Sediments)
- Sand, Gravelly Muddy (Undifferentiated)
- Sandy-Mud (Marine Sediments)



Wales National Seascape Character Assessment

Figure 6: Draft Marine Character Areas with Bedrock Geology

- 01: Severn Estuary and Cardiff Bay
- 02: Nash Sands and Glamorgan Coastal Waters
- 03: Swansea Bay and Porthcawl
- 04: Helwick Channel and The Gower
- 05: Carmarthen Bay and Estuaries
- 06: Bristol Channel
- 07: South Pembrokeshire Coastal and Inshore Waters
- 08: South Pembrokeshire Open Waters
- 09: Milford Haven
- 10: Western Bays and Coastal Islands
- 11: West Pembrokeshire Islands, Bars and Inshore Waters
- 12: Irish Sea Offshore
- 13: St David's to Strumble Head Coastal Waters
- 14: Cardigan Bay (south)
- 15: Outer Cardigan Bay
- 16: Cardigan Bay (north) and Estuaries
- 17: Tremadog Bay and Dwyryd Estuary
- 18: Llŷn and Bardsey Island
- 19: Llŷn and South West Anglesey Offshore Waters
- 20: Caernarfon Bay
- 21: Menai Strait
- 22: Holy Island West and Penrhos Bay
- 23: West Anglesey Open Waters
- 24: Holyhead Bay and The Skerries
- 25: North Anglesey Coastal Waters
- 26: North-West Anglesey Open Waters
- 27: Conwy and Red Wharf Bays
- 28: Rhyl Flats and Dee Estuary
- 29: Outer Liverpool and Conwy Bays

Map Scale @ A3: 1:1,000,000



Wales National Seascape Character Assessment

Key variations in marine habitats, wave energy and water depth

- High energy rock
- High energy sublittoral sediment / Medium depth water (50 - 100m)
- High energy sublittoral sediment / Shallow water (0-50m)
- Low energy rock
- Low energy sublittoral sediment / Deep water (100 - 500m)
- Low energy sublittoral sediment / Medium depth water (50 - 100m)
- Low energy sublittoral sediment / Shallow water (0-50m)
- Maerl beds, seagrass beds and lagoons
- Moderate energy rock
- Moderate to high energy sublittoral sediment / Medium depth water (50 - 100m)
- Moderate to high energy sublittoral sediment / Shallow water (0-50m)
- Reefs

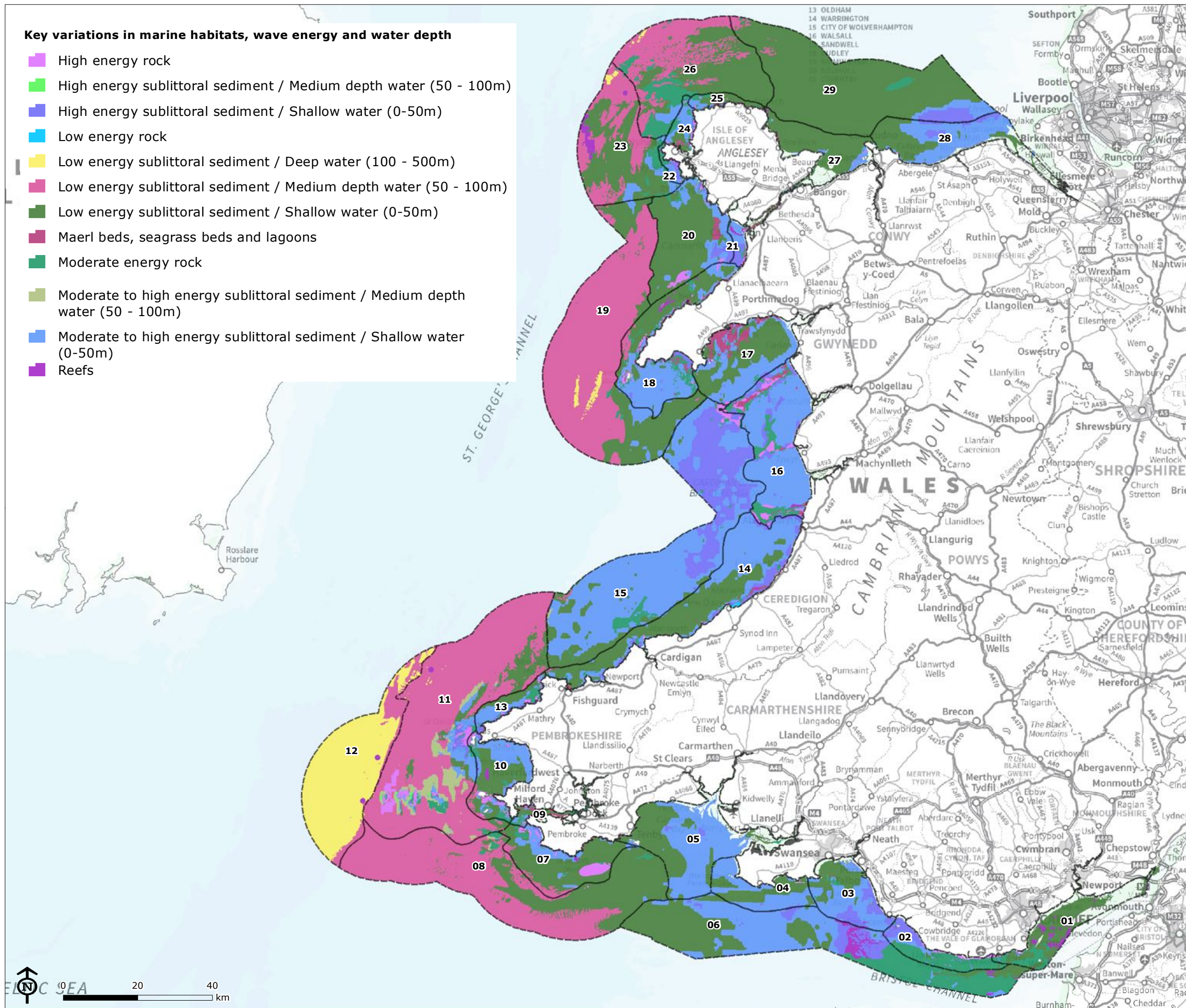


Figure 7: Draft Marine Character Areas and Key Variations in Marine Habitats, Wave Energy and Water Depth

- 01: Severn Estuary and Cardiff Bay
- 02: Nash Sands and Glamorgan Coastal Waters
- 03: Swansea Bay and Porthcawl
- 04: Helwick Channel and The Gower
- 05: Carmarthen Bay and Estuaries
- 06: Bristol Channel
- 07: South Pembrokeshire Coastal and Inshore Waters
- 08: South Pembrokeshire Open Waters
- 09: Milford Haven
- 10: Western Bays and Coastal Islands
- 11: West Pembrokeshire Islands, Bars and Inshore Waters
- 12: Irish Sea Offshore
- 13: St David's to Strumble Head Coastal Waters
- 14: Cardigan Bay (south)
- 15: Outer Cardigan Bay
- 16: Cardigan Bay (north) and Estuaries
- 17: Tremadog Bay and Dwyryd Estuary
- 18: Llŷn and Bardsey Island
- 19: Llŷn and South West Anglesey Offshore Waters
- 20: Caernarfon Bay
- 21: Menai Strait
- 22: Holy Island West and Penrhos Bay
- 23: West Anglesey Open Waters
- 24: Holyhead Bay and The Skerries
- 25: North Anglesey Coastal Waters
- 26: North-West Anglesey Open Waters
- 27: Conwy and Red Wharf Bays
- 28: Rhyl Flats and Dee Estuary
- 29: Outer Liverpool and Conwy Bays

Map Scale @ A3: 1:1,000,000

